



JACC[®]
Heart Failure

Best of JACC: Heart Failure 2020

Christopher M. O'Connor, MD, MACC

President and Executive Director

Inova Heart and Vascular Institute

Editor-in-Chief, JACC: Heart Failure

Past President, Heart Failure Society of America



EDITOR-IN-CHIEF

Christopher M. O'Connor, MD,
Inova Heart and Vascular Institute,
Falls Church, VA

EXECUTIVE EDITOR

Mona Fiazat, PharmD,
Duke University Medical Center,
Durham, NC

DEPUTY EDITORS

JoAnn Lindenfeld, MD,
Vanderbilt Heart and Vascular Institute,
Nashville, TN

Joseph G. Rogers, MD,
Duke University School of Medicine,
Durham, NC

ASSOCIATE EDITORS

Martin R. Cowie, MD,
National Heart & Lung Institute,
London, United Kingdom

G. Michael Felker, MD, MHS,
Duke Clinical Research Institute,
Durham, NC

James L. Januzzi, Jr., MD,
Massachusetts General Hospital,
Boston, MA

Peter S. Pang, MD,
Indiana University,
Indianapolis, IN

Hector O. Ventura, MD,
Ochsner Medical Institute,
New Orleans, LA

David J. Whellan, MD, MHS,
Jefferson Medical College,
Philadelphia, PA

GUEST EDITORS-IN-CHIEF

John R. Teerlink, MD,
San Francisco VA Medical Center,
San Francisco, CA

Barry H. Greenberg, MD,
University of California-San Diego
Medical Center, La Jolla, CA



JACC
Journals

Top Content Topic Areas for JACC-HF

- Pharmacology
- Right Heart Failure and Pulmonary Hypertension
- Comorbidities
- Basic Science/Translational Research/Pathophysiology
- Clinical Trial Methodology and Predictive Models
- Heart Failure with Preserved Ejection Fraction (HFpEF)
- Biomarkers
- Advanced Heart Failure/Mechanical Support
- Heart Failure - Imaging
- Heart Failure - Electrophysiology
- Non-Pharmacologic Therapies
- Special Populations and Global Health
- Acute Heart Failure
- Outcomes and Quality



JACC
Journals

Innovative Initiatives

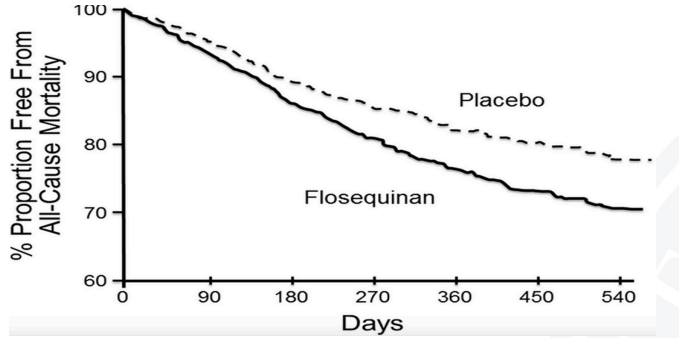
JACC: HEART FAILURE
© 2020 PUBLISHED BY ELSEVIER ON BEHALF OF THE
AMERICAN COLLEGE OF CARDIOLOGY FOUNDATION

JACC: Heart Failure

June 01, 2017 | Vol. 5 No. 6

FEATURED ARTICLE: DEAD LETTER OFFICE

Long-Term Effects of Flosequinan on the Morbidity and Mortality of Patients With Severe Chronic Heart Failure: Primary Results of the PROFILE Trial After 24 Years
Milton Packer, Bertram Pitt, et al



JACC: HEART FAILURE
© 2019 BY THE AMERICAN COLLEGE OF CARDIOLOGY FOUNDATION
PUBLISHED BY ELSEVIER

VOL. 7, NO. 3, 2019

HEART FAILURE IN WOMEN SPECIAL ISSUE

STATE-OF-THE-ART REVIEWS

Primary Prevention of Heart Failure in Women

Melissa A. Daubert, MD, Pamela S. Douglas, MD



Patient Perspective

LIVING WITH HEART FAILURE

Tales of a Broken Heart



My name is Carolyn Cross and I am happy to be alive enjoying life with my family and friends today. Until June 8, 2016, I was working, busy being a wife and grandmother, and serving in many aspects of minis-



JACC
Journals

- Dead Letter Office
- Patient Perspectives
- 50th Anniversary of Cardiac Transplantation: Dedicated Issue
- HF in Women- Special Issue
- Editor's Blog
- International Advisory Board
- Simultaneous pubs
ACC20/HRS19/HFSA19
- JACC-HF Position Papers
- Cardiogenic Shock Issue 7/20

ARTICLE SUBMISSION PERFORMANCE

JACC: Heart Failure | Report Period: 2019



ARTICLE SUBMISSIONS

972

-0.5% vs. Previous Period (977)

OVERALL ACCEPTANCE RATE*

9.0%

**Overall acceptance rate based on Original Research Papers.*

TOP ARTICLE SUBMISSION TOPICS

1	Outcomes and Quality	152
2	Advanced Heart Failure	147
3	Acute Heart Failure	130
4	Heart Failure with Preserved Ejection Fraction (HFpEF)	90
5	Biomarkers	88

TOP COUNTRIES SUBMITTING PAPERS

COUNTRY	TOTAL PAPERS	ACC
United States	466	
China	69	
Italy	58	
Japan	56	
United Kingdom	37	
Germany	33	
Canada	21	
Netherlands	33	
Spain	21	
France	24	
Korea (South), Republic ..	22	



JACC
Journals

Journal Impact

Most Shared

Most Downloaded

Articles in Press

Altmetric tracks attention and engagement of scholarly articles.



Medical Management of Heart Failure With Reduced Ejection Fraction in Patients With Advanced Renal Disease

Last mentioned on Thu Aug 01 2019



Real World Use of Hypertonic Saline in Refractory Acute Decompensated Heart Failure

Last mentioned on Fri Apr 10 2020



Omecamtiv Mecarbil in Chronic Heart Failure With Reduced Ejection Fraction

Last mentioned on Mon Apr 13 2020



JACC
Journals

2020 Hot Topics

- COVID-19 Rapid Reports
- Clinical Trials
- Biomarkers
- Device Therapy
- Inflammation and HF



JACC
Journals

Editor's Page

Heart Failure Collaboratory Statement on Clinical Trials in the Landscape of COVID-19

William T. Abraham MD, Mona Fiazat PharmD, Mitchell A. Psotka MD PhD, Christopher M. O'Connor MD

Recommendations

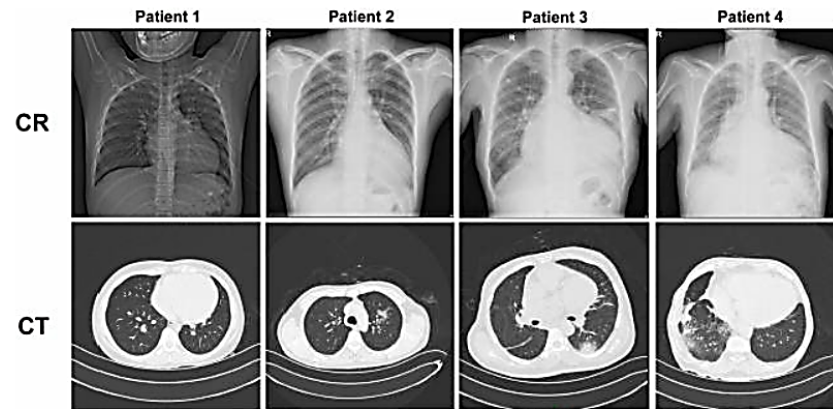
1. Study sponsors and sites should exercise the option of following patients using telephone follow-up procedures, until the COVID-19 pandemic abates.
2. Diagnostic procedures, such as echocardiography, and some study interventions such as the implantation of an investigational study device should be delayed until the COVID-19 pandemic abates, due to the absence of safety concerns or overwhelming evidence benefit.
3. Trials under development or with central IRB capability are encouraged to consider central IRB use.
4. Statistical consideration should account for asymmetric enrollment by geography, and analysis of results before and after a pre-specified date on which COVID-19 had a significant influence on trial conduct.
5. Specific issues regarding adjudication definitions in light of COVID-19 infection should be adjusted in the clinical events committee manuals of operation.
6. Encourage maintenance of the patient screening architecture for HF clinical trials so that screening may be quickly escalated again once the pandemic subsides, in as much as this can be accomplished safely and remotely.
7. Consider geographically targeting sites for initiation that are less likely to be influenced by the pandemic.

Letter to the Editor

End-stage Heart Failure with COVID-19: Strong Evidence of Myocardial Injury by 2019-nCoV

Nianguo Dong ^{*}, Jie Cai ^{*}, Ying Zhou, Junwei Liu, Fei Li [✉]

Figure 1. Chest radiography (CR) and computed tomography (CT) of four end-stage heart failure patients with COVID-19.



STATE-OF-THE-ART PAPER

Endpoints in Heart Failure Drug Development

History and Future

Mona Fiuzat, PHARM^{d,a,b} Naomi Lowy, MD,^b Norman Stockbridge, MD, PhD,^b Marco Sbolli, MD,^c Federica Latta, MI JoAnn Lindenfeld, MD,^d Eldrin F. Lewis, MD, MPH,^e William T. Abraham, MD,^f John Teerlink, MD,^g Mary Walsh, MD,^h Paul Heidenreich, MD,ⁱ Biykem Bozkurt, MD,^j Randall C. Starling, MD, MPH,^k Scott Solomon, MI G. Michael Felker, MD,³ Javed Butler, MD,^l Clyde Yancy, MD,^m Lynne W. Stevenson, MD,^d Christopher O'Connor, MD,^c Ellis Unger, MD,^b Robert Temple, MD,^b John McMurray, MDⁿ

Q3: If a drug could make a major improvement in how you feel or what you are able to do, but might not allow you to live quite as long, would you be willing to take a risk of having less time alive for improving how you feel—or function?

Answered: 42 Skipped: 0

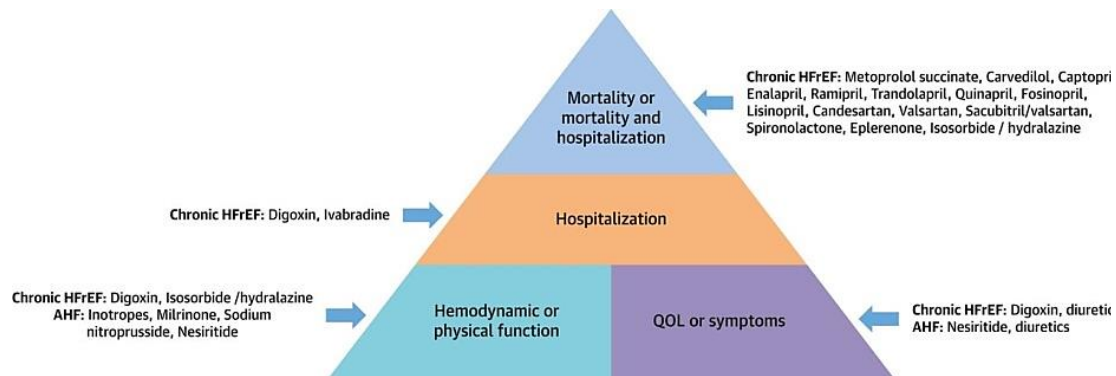
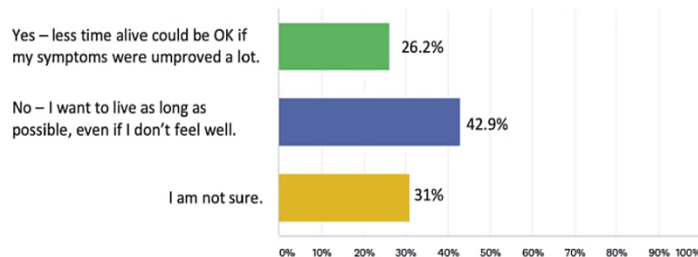
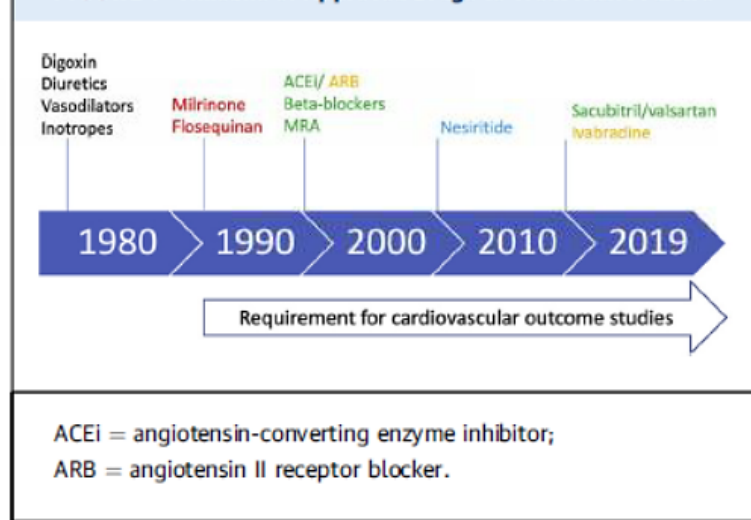


FIGURE 1 Timeline of Approved Drugs to Treat Heart Failure



JACC: HF Expert Consensus Position Paper

JACC: HEART FAILURE
© 2020 BY THE AMERICAN COLLEGE OF CARDIOLOGY FOUNDATION
PUBLISHED BY ELSEVIER

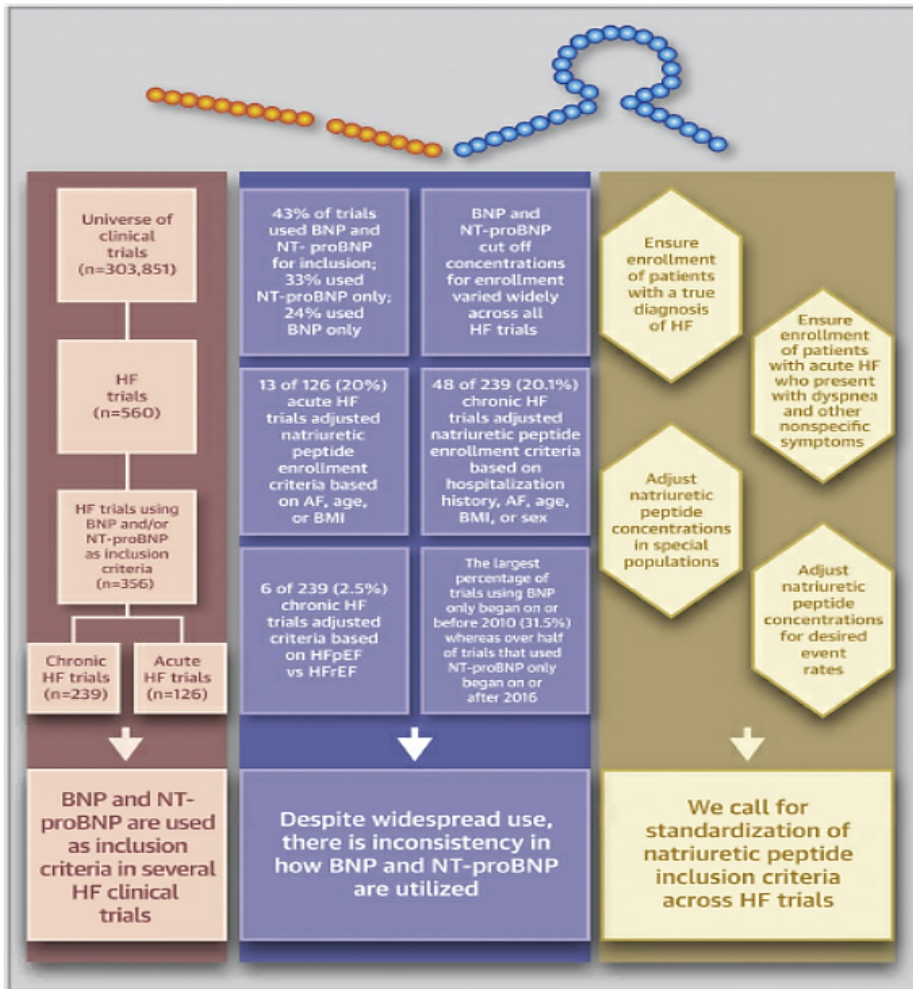
VOL. ■, NO. ■, 2020

REVIEW ARTICLE

Natriuretic Peptides as Inclusion Criteria in Clinical Trials

A JACC Heart Failure Position Paper

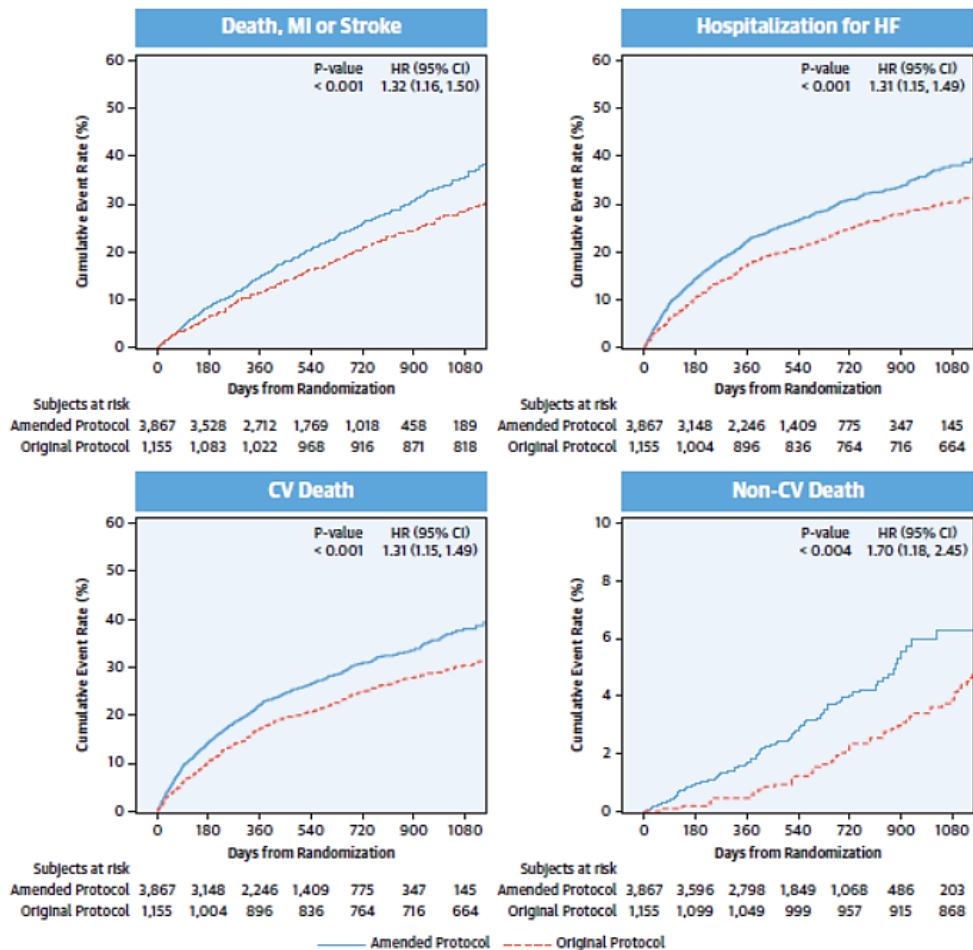
Nasrien E. Ibrahim, MD,^{a,b} John C. Burnett, Jr, MD,^c Javed Butler, MD, MPH, MBA,^d Alexander Camacho, PhD,^a
G. Michael Felker, MD,^e Mona Fiuzat, PHARM D,^e Christopher O'Connor, MD,^{e,f} Scott D. Solomon, MD,^{b,g}
Muthiah Vaduganathan, MD, MPH,^{b,g} Michael R. Zile, MD,^h James L. Januzzi, Jr, MD^{a,b,i}



Natriuretic Peptide-Based Inclusion Criteria in a Heart Failure Clinical Trial

Insights From COMMANDER HF

Jonathan W. Cunningham, MD,^{a,*} João Pedro Ferreira, MD, PhD,^{b,*} Hsiaowei Deng, MS,^c Stefan D. Anker, MD, PhD,^d William M. Byra, MD,^e John G.F. Cleland, MD,^{e,f} Mihai Gheorghiade, MD,^{g,†} Carolyn S.P. Lam, MD, PhD,^{h,j} David La Police,^z Mandeep R. Mehra, MD,^a James D. Neaton, PhD,^k Theodore E. Spiro, MD,^l Dirk J. van Veldhuisen, MD, PhD,^m Barry Greenberg, MD,ⁿ Faiez Zannad, MD, PhD^b



LBCT / ACC 2020

Effects of Sacubitril/Valsartan on N-Terminal Pro-B-Type Natriuretic Peptide in Heart Failure With Preserved Ejection Fraction

Jonathan W. Cunningham, MD,^a Muthiah Vaduganathan, MD, MPH,^a Brian L. Claggett, PhD,^a Michael R. Zile, MD,^b Inder S. Anand, MD, DPHIL,^c Milton Packer, MD,^d Faiez Zannad, MD, PhD,^e Carolyn S.P. Lam, MD, PhD,^{f,gs,h} Stefan Janssens, MD,ⁱ Pardeep S. Jhund, MBChB, PhD,^j Lars Kober, MD, DMSc,^k Jean Rouleau, MD,^l Sanjiv J. Shah, MD,^m Vijay K. Chopra, MD,ⁿ Victor C. Shi, MD,^o Martin P. Lefkowitz, MD,^o Margaret F. Prescott, PhD,^o Marc A. Pfeffer, MD, PhD,^a John J.V. McMurray, MD,^l Scott D. Solomon, MD^a

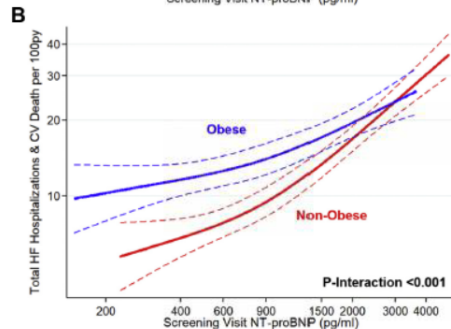
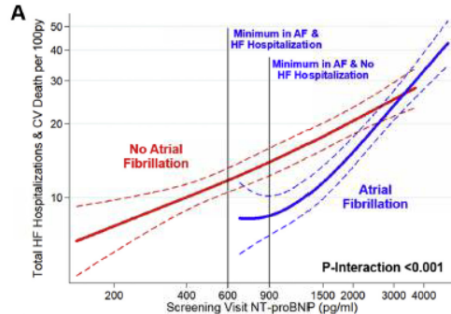
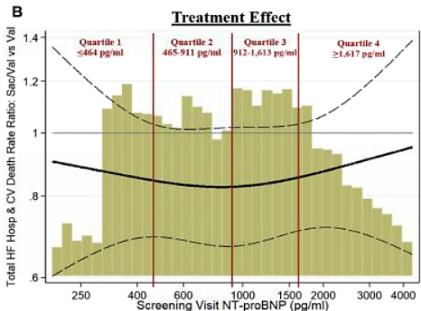
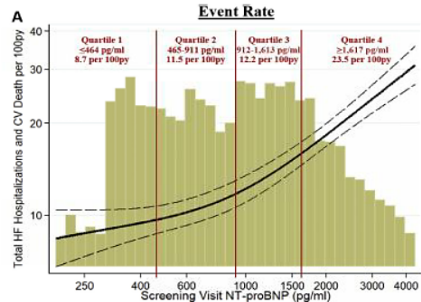
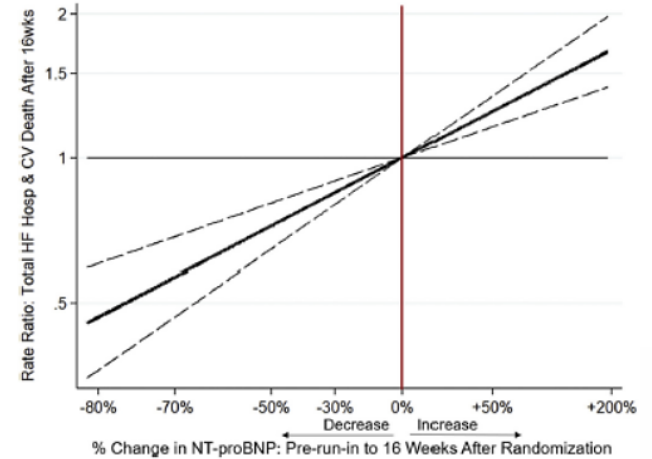
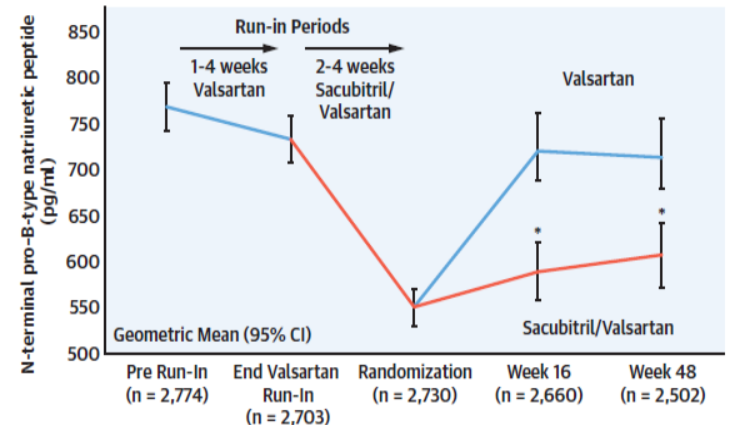


FIGURE 3 Association between NT-proBNP Change and Rate of Subsequent Total HF Hospitalizations and CV Death



CENTRAL ILLUSTRATION N-Terminal Pro-B-Type Natriuretic Peptide Trajectory in the PARAGON-HF Trial

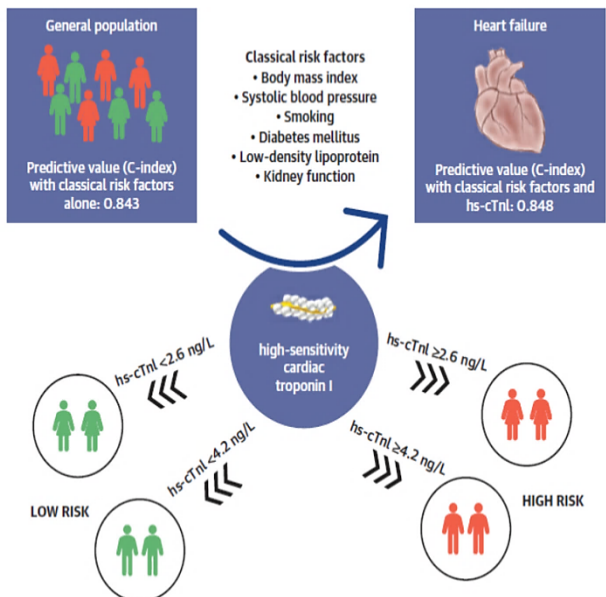


High-Sensitivity Cardiac Troponin I Levels and Prediction of Heart Failure

Results From the BiomarCaRE Consortium

Isabell Yan, MD,^{a,*} Christin S. Börschel, MD,^{a,b,*} Johannes T. Neumann, MD,^{a,b} Ngoc A. Sprünker,^a Nataliya Makarova,^{a,b} Jukka Kontto,^c Kari Kuulasmaa, PhD,^c Veikko Salomaa, MD, PhD,^c Christina Magnussen, MD,^{a,b} Licia Iacoviello, MD, PhD,^{d,e} Augusto Di Castelnuovo, PhD, MSc,^d Simona Costanzo, PhD, MSc,^d Allan Linneberg, MD, PhD,^{e,h} Stefan Söderberg, MD, PhD,ⁱ Tanja Zeller, PhD,^{a,b} Francisco M. Ojeda-Echevarria, PhD,^a Stefan Blankenberg, MD,^{a,b} Dirk Westermann, MD,^{a,b}

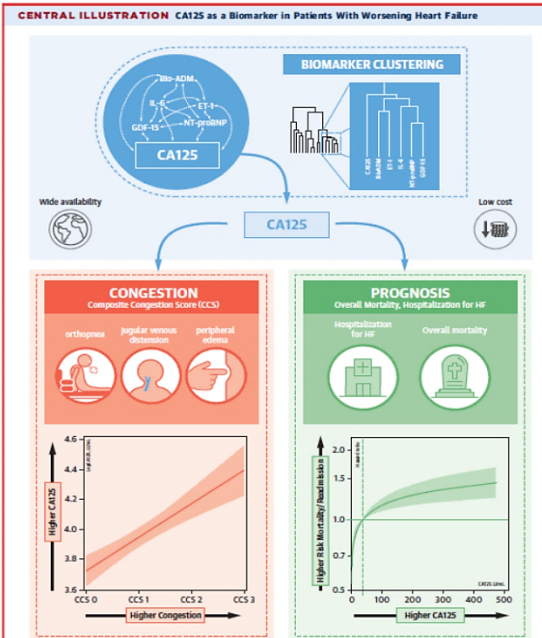
CENTRAL ILLUSTRATION Predictive Value of hs-TnI for HF in the General Population



Clinical Role of CA125 in Worsening Heart Failure

A BIostat-CHF Study Subanalysis

Julio Núñez, MD, PhD,^{a,b} Antoni Bayés-Genis, MD, PhD,^{b,c} Elena Revuelta-López, PhD,^{b,d} Jozine M. ter Maaten, MD, PhD,^e Gema Miñana, MD, PhD,^{a,b} Jaume Barallat, MD, PhD,^f Adriana Cserkóová, PhD,^d Vicent Bodí, MD, PhD,^{a,b} Agustín Fernández-Cisnal, MD,^a Eduardo Núñez, MD, MPH,^a Juan Sanchis, MD, PhD,^{a,b} Chim Lang, MD, PhD,^g Leong L. Ng, MD, PhD,^b Marco Metra, MD, PhD,^d Adriaan A. Voors, MD, PhD^e



SPECIAL FOCUS ISSUE: DEVICE THERAPY

STATE-OF-THE-ART REVIEW




Novel Devices in Heart Failure

BAT, Atrial Shunts, and Phrenic Nerve Stimulation

Emily P. Zeitler, MD, MHS,^{a,b} William T. Abraham, MD^c



Zeitler, E.P. et al. J Am Cardiol HF. 2020; 8 (4): 251-64.

Baroreceptor Activation Therapy	Interatrial Shunt Device	Phrenic Nerve Stimulation
		
Physiologic target	Physiologic target	Physiologic target
Parasympathetic activation to quiet persistent sympathetic activation	Shunting of blood volume from left to right heart to relieve left atrial pressure	Phrenic nerve activation to reduce sleep disordered breathing
Target population	Target population	Target population
Heart failure with reduced ejection fraction on optimal medical therapy	Heart failure (with or without LVEF) with elevated left atrial pressures	Central sleep apnea which is highly correlated with heart failure
Regulatory status	Regulatory status	Regulatory status
<ul style="list-style-type: none">• Commercially available in Europe (CE Mark)• PMA approval August 2019• Pivotal study as part of expedited access pathway including balance of pre and post market data collection and innovative statistical methods	<ul style="list-style-type: none">• No devices currently approved to establish left to right shunting in heart failure• Ongoing pivotal evaluation for this indication by multiple manufacturers	<ul style="list-style-type: none">• Currently approved device through traditional premarket approval (PMA) pathway

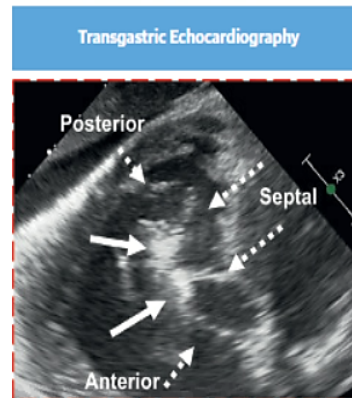
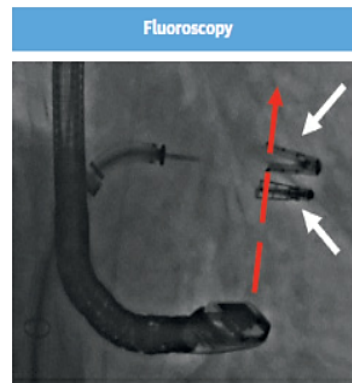
CLINICAL RESEARCH

Transcatheter Edge-to-Edge Tricuspid Repair for Severe Tricuspid Regurgitation Reduces Hospitalizations for Heart Failure

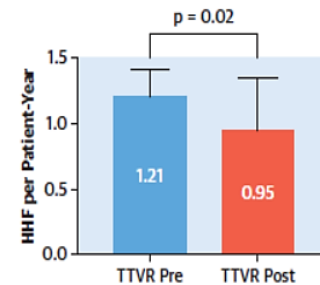


Mathias Orban, MD,^{a,b,*} Karl-Philipp Rommel, MD,^{c,*} Edwin C. Ho, MD,^{d,e,*} Matthias Unterhuber, MD,^c Alberto Pozzoli, MD,^e Kim A. Connelly, MD, PhD,^d Simon Deseive, MD,^{a,b} Christian Besler, MD,^c Geraldine Ong, MD, MSc,^d Daniel Braun, MD,^a Jeremy Edwards, MD,^d Mizuki Miura, MD, PhD,^e Gökhan Gülmez, MD,^e Lukas Stolz, CAND.MED,^a Mara Gavazzoni, MD,^e Michel Zuber, MD,^{e,f} Martin Orban, MD,^{a,b} Michael Nabauer, MD,^a Francesco Maisano, MD,^e Holger Thiele, MD,^c Steffen Massberg, MD,^{a,b} Maurizio Taramasso, MD, PhD,^e Neil P. Fam, MD, MSc,^{d,†} Philipp Lurz, MD, PhD,^{c,†} Jörg Hausleiter, MD^{a,b,†}

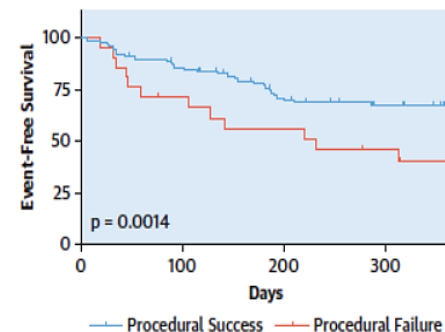
CENTRAL ILLUSTRATION Transcatheter Edge-to-Edge Tricuspid Valve Repair Is a Novel Treatment Option for Severe Tricuspid Regurgitation With the Potential to Reduce Heart Failure Hospitalization Rate and Improve Outcome if Procedural Success Is Achieved



Isolated TTVR Reduces Hospitalization Rate for Heart Failure



TR Reduction Through Isolated TTVR is Associated with Less Mortality and Hospitalizations for Heart Failure



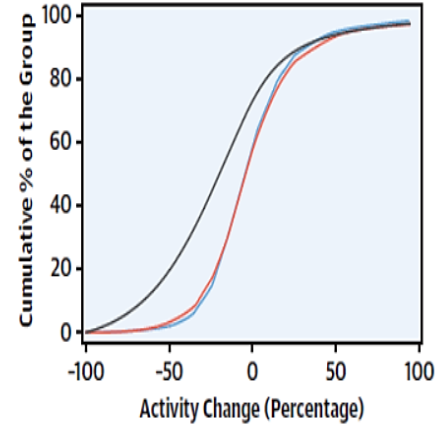
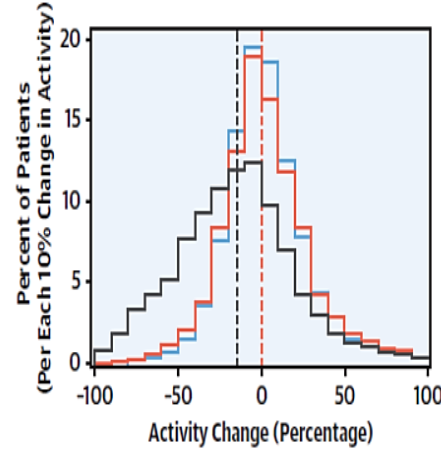
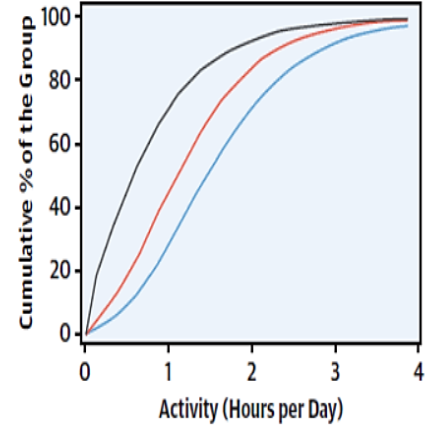
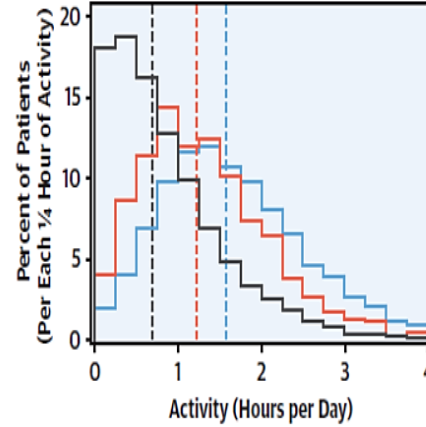
Orban, M. et al. J Am Coll Cardiol HF, 2020; 8(4):265-76.





Association of Implantable Device Measured Physical Activity With Hospitalization for Heart Failure

Jacob P. Kelly, MD, MHS,^{a,b} Nicholas G. Ballew, PhD,^c Li Lin, MS,^c Bradley G. Hammill, DrPH,^{a,c}
 Timothy M. Stivland, MBA,^d Paul W. Jones, MS,^d Lesley H. Curtis, PhD,^{a,c} Adrian F. Hernandez, MD, MHS,^a
 Melissa A. Greiner, MS,^c Brett D. Atwater, MD^a



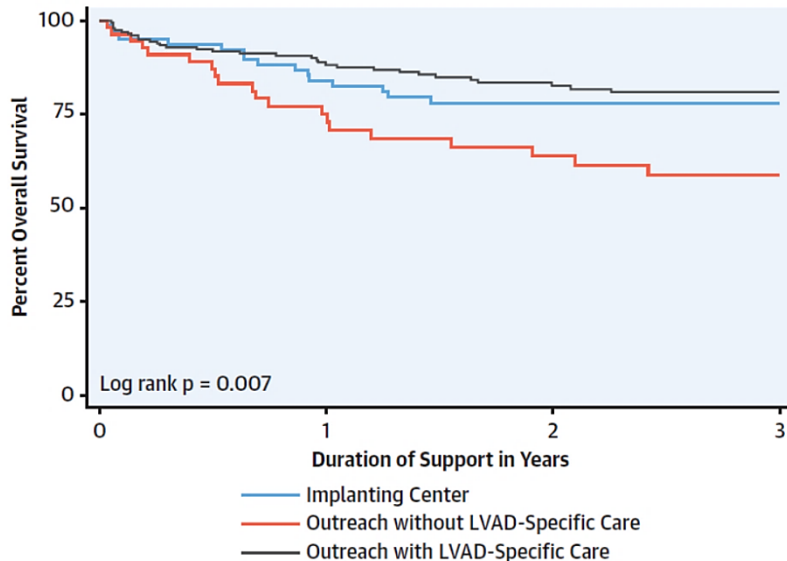
— No Event — Event >1 Year Away — Event Imminent

Impact of Shared Care in Remote Areas for Patients With Left Ventricular Assist Devices



Michael Yaoyao Yin, MD,^{a,c} Jennifer Strega, NP-C,^{a,b,c} Edward M. Gilbert, MD,^{a,c} Josef Stehlik, MD, MPH,^{a,c} Stephen H. McKellar, MD,^{b,c} Ashley Elmer, MS,^{a,b} Thomas Anderson, MD,^{a,c} Mossab Aljuaid, MD,^{a,c} Jose Nativi-Nicolau, MD,^{a,c} Antigone G. Koliopoulou, MD,^b Erin Davis, BSN,^{a,b} James C. Fang, MD,^{a,c} Stavros G. Drakos, MD, PhD,^{a,c} Craig H. Selzman, MD,^b Omar Wever-Pinzon, MD,^{a,c}

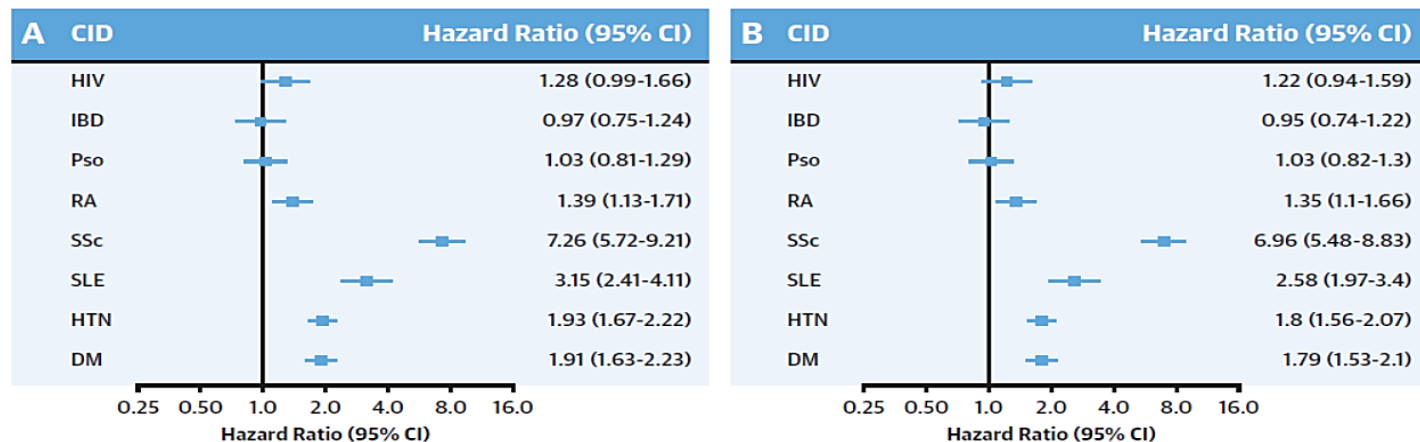
CENTRAL ILLUSTRATION Impact of LVAD-Specific Care on Patient Outcome in Shared-Care Outreach Facilities



Differential Associations of Chronic Inflammatory Diseases With Incident Heart Failure

Sameer Prasada, MD,^a Adovich Rivera, MD,^a Arvind Nishtala, MD, MPH,^b Anna E. Pawlowski, MBA,^c Arjun Sinha, MD,^b Joshua D. Bundy, PhD, MPH,^d Simran A. Chadha, BS,^e Faraz S. Ahmad, MD, MS,^{b,f} Sadiya S. Khan, MD, MS,^{b,f} Chad Achenbach, MD, MPH,^{f,g} Frank J. Palella, Jr, MD,^g Rosalind Ramsey-Goldman, MD, DrPH,^h Yvonne C. Lee, MD, MMSc,^h Jonathan I. Silverberg, MD, PhD, MPH,^{f,i} Babafemi O. Taiwo, MBBS,^g Sanjiv J. Shah, MD,^b Donald M. Lloyd-Jones, MD, ScM,^{b,f} Matthew J. Feinstein, MD, MSc^{b,f}

CENTRAL ILLUSTRATION Heart Failure Risk Among Chronic Inflammatory Disease Groups



JACC-HF Conclusions

Goals

- Recruit the best authors
- Recruit the best papers
- Affiliate with societies and organizations
- Affiliate with meetings

Features

- Meeting Summaries
- Special Focus Issues
- Consensus Statements / Expert Forum Papers
- Fast Track Review for Society Papers

